



Engineering Research Centers

ERC

Gen-4 ERC: Infrastructure Management

NSF 19-503

Kickoff Meeting
October 14-15

Deborah Jackson, ENG/ERC
Program Director



Management Structure

- An **effective management structure** begins with a clear understanding of the ERC goals
- Has the ability to adapt to the changing needs of the ERC
- Clearly designate a lead person or team with responsibility for each foundational component



OUTLINE

- **Internal ERC Management Structures**
- External ERC Management Structures
- Dissemination and Data Management

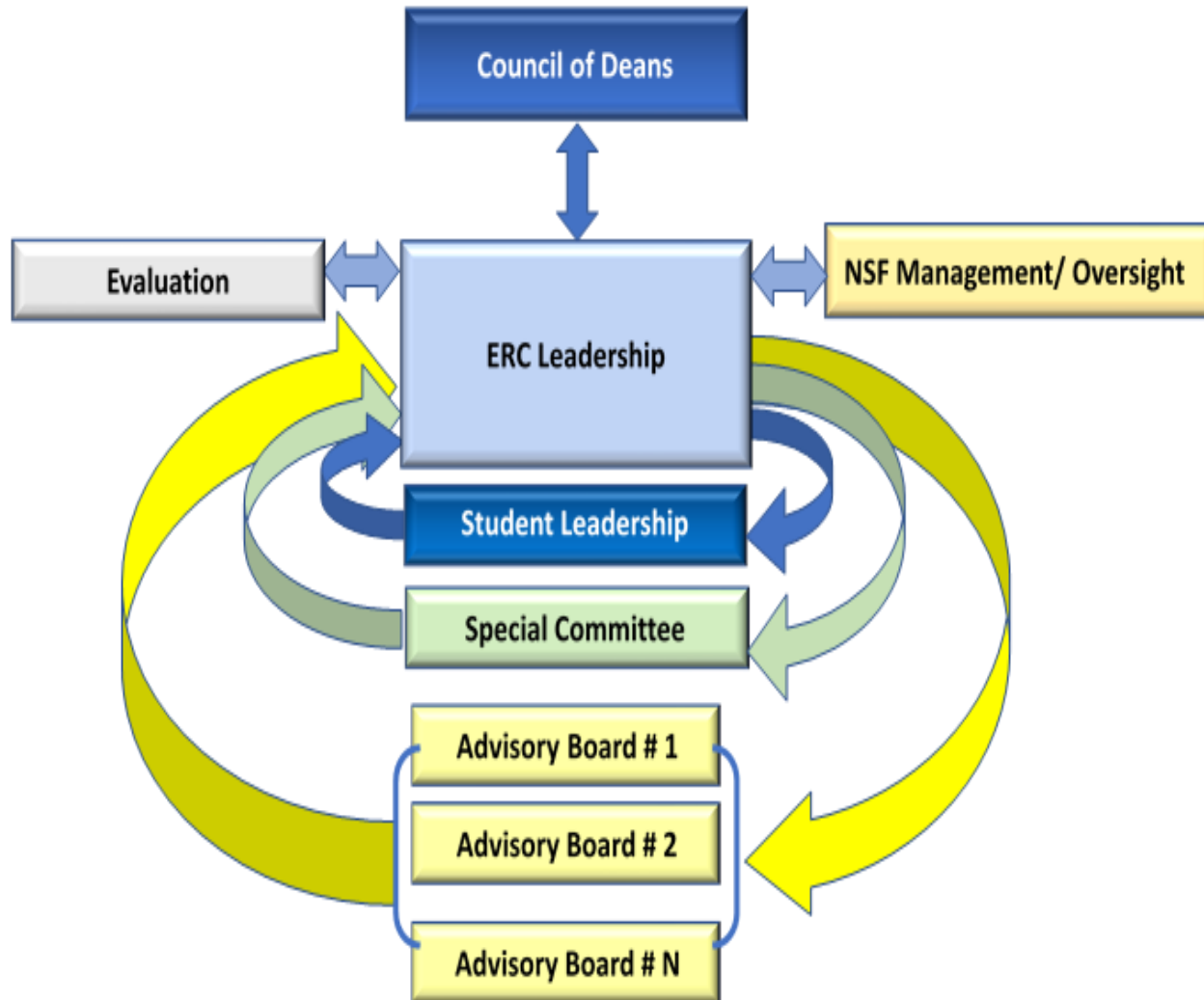


Required ERC Configuration

- **Lead Institution**
 - Responsible to lead and manage the ERC
- **Lead and Core Institutions**
 - Contribute diverse teams of faculty and students to fulfill vision
 - Cost sharing required
- **Affiliated Institutions**
 - Contribute faculty and students who carry out research/education
 - No cost sharing
- **Foreign Partner Universities (If relevant)**
 - Faculty and students carry out research/education
 - Support for foreign partners comes from foreign sources



Flexibility in Management Processes



PIs will:

- Define the roles and charter of various advisory boards/entities;
- Explain the ERC's processes for;
 - Team communication;
 - Taking in and responding to advisory feedback



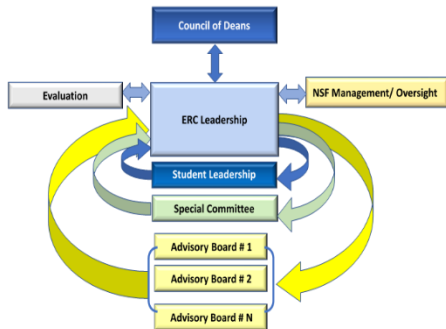
Mandated Advisory Boards Roles

- **Dean's Council**

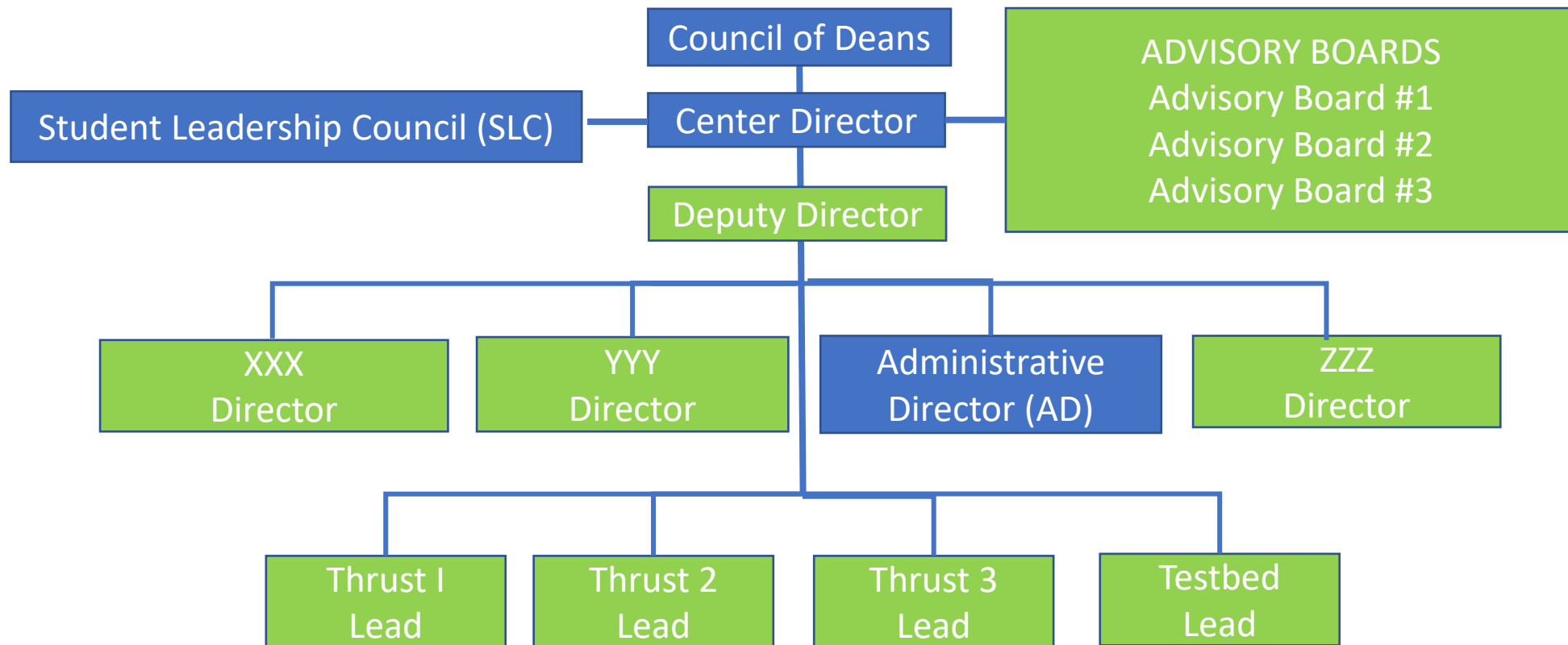
- Oversees ERC execution; assures departmental cooperation for faculty participation
- Oversees diversity partnership between the ERC and the contributing departments
- Assures cross-university partnership and agreements

- **Student Leadership Council (SLC) Chair and co-Chair –**

- Set and fulfill the SLC vision,
- develop SLC activities,
- develop and maintain the SLC membership,
- lead SLC SWOT analysis,
- attend ERC Leadership Team meetings,
- organize SLC SWOT meeting with NSF site visit team



Sample Org Chart





Roles of Mandated Leadership Team Positions

- **Director** - Set and fulfill the vision, responsible for strategic planning, building a diverse and committed team, allocation of funds, management, and reporting*
- **Administrative Director** - Day to day management, financial management, management of information system for reporting and database, management of site visits and other events (Orientation sessions provided)

[*Team Science: Bringing it all together for Successful Convergence Research \(65 min\) Michelle Bennett](#)



OUTLINE

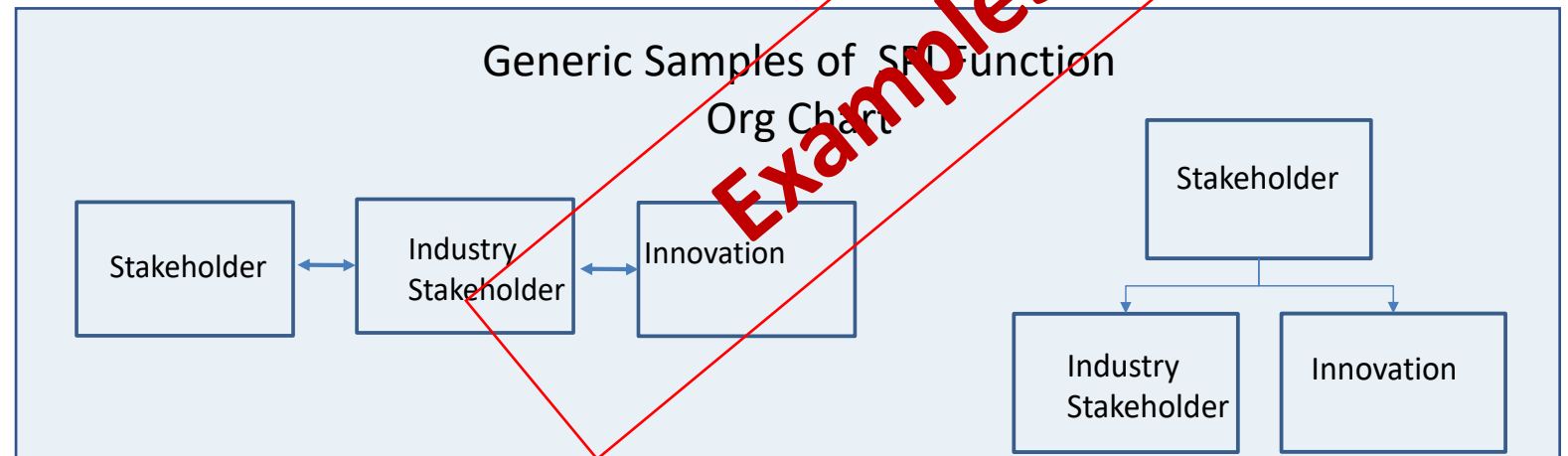
- Internal ERC Management Structures
- **External ERC Management Structures**
- Dissemination and Data Management



Strategic Partner & Innovation (SPI) Lead

Creates strategic plan for nurturing ERC's innovation ecosystem. Under that umbrella, the SPI Director defines the organization, reporting structure, and processes needed to complete the following 3 functions:
see details in Innovation Ecosystem presentation

- a) nurture innovation ecosystem,
- b) manage industry partner relations,
- c) engage stakeholders.





OUTLINE

- Internal ERC Management Structures
- External ERC Management Structures
- **Dissemination and Data Management**



Dissemination and Data Management

- **Dissemination Plan:** NSF PAPPG Chapter XI Section D.4 “Dissemination and Sharing of Research Results”
- **Public Access Policy:** NSF PAPPG Chapter XI Section D.2 “Copyright”
https://www.nsf.gov/news/special_reports/public_access/
- **Data Management Plan** guidelines:
<https://www.nsf.gov/bfa/dias/policy/dmp.jsp>



Relevant Materials

- Best Practices Manual (to be updated), http://erc-assoc.org/best_practices/best-practices-manual
- ERCWEB Library, <https://www.erc-reports.org/public/library>
 - Reporting requirements/guidelines
 - Performance metrics

QUESTIONS